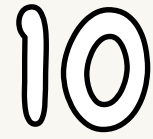


# NEWSLETTER

MARCH 2026



## HEADTEACHER'S MESSAGE

Dear Families,

As we head into spring, it's lovely to see the lighter mornings and brighter days arriving. This time of year always brings a sense of fresh energy and new beginnings, and we have lots to look forward to in the coming weeks.

We have had such a wonderful time celebrating World Book Day in school this week. It was especially lovely to welcome so many families into school for our Come and Read session—thank you to everyone who joined us. The children were so proud to share stories with you, and the warm buzz around school was fantastic.

The children have clearly had great fun creating their toilet roll book characters, and we were blown away by their imagination and creativity! These will be judged soon, and we will share the results with you next week.

Next week, we will also be marking British Science Week, with a range of activities planned to spark curiosity, creativity and a love of scientific discovery across the school and look forward to sharing these with you.

Warm regards,  
Mrs Bradley

## The importance of sleep



Sleep plays a vital role in children's physical health, emotional wellbeing, and their ability to learn effectively.

This month, we marked Sleep Awareness Month to highlight that most primary-aged children need at least 9 to 12 hours of sleep each night to stay focused and ready for school.

### Key tips for better sleep:

- Create a calming bedtime routine that avoids screens for at least 30 minutes before sleep.
- Make the bedroom a quiet, comfortable space by limiting noise, light, and distractions.

## We need dressing up clothes.....



We are developing our lunchtime play provision and the children would love more dressing up. If you have any dressing up costumes you no longer use please send them into the school office. We are in particular need of older children's outfits.

Thank you



## A reminder about punctuality

Please can we also take a moment to remind all families about the importance of children arriving on time each morning. The gates close at 8.45 am to allow the children to register in class on time. Just a few minutes late each day quickly adds up—over the course of a year this can amount to several full days of lost learning. Being on time helps children start the day calmly, settle into routines, and ensures they don't miss key learning at the start of each lesson

## Attendance

**Whole School: 95.2% Our target is 96%**

### February classes.

Sycamore 93.8%

Rowan 97.2%

Elm 95.9%

Oak 98.4%

Birch 95.5%

Ash 95.1%

Acer 93.8%

Cherry 95.0%



## Holidays

We are unable to authorise holidays during term time unless exceptional circumstances are provided. Our attendance policy is available to view on our school website. We suggest you make use of the extra week in June to book a more affordable holiday.

Please note that any fines given by the local authority for unauthorised absences are not received into school.

## Key Dates



### Spring Term

Week of 9<sup>th</sup> March: Pupils consultation evenings  
9<sup>th</sup> March: Mother's day sale in playground (PTFA event)

16<sup>th</sup> March: Big walk and wheel event begins

16<sup>th</sup> March: Year 5 performance at Cheltenham town hall.

20<sup>th</sup> March Red Nose Day

20<sup>th</sup> March: Rocksteady concert for families of band members.

24<sup>th</sup> & 25<sup>th</sup> March Y3 and 4 Spring Production

26<sup>th</sup> March: Easter Discos (PTFA event)

27<sup>th</sup> March: Final day of Spring Term

27<sup>th</sup> March: 9.30am: Rocksteady concert (families of pupils in bands invited to attend)

### Summer Term

13<sup>th</sup> April: First day of term, all pupils in.

11<sup>th</sup> May: Year 6 SATS week

22<sup>nd</sup> May: Sponsored Bounceathon, more details to follow.

22<sup>nd</sup> May: End of term

8<sup>th</sup> June: Return to school, all pupils in.

15<sup>th</sup>: Father's day sale. PTFA event.

19<sup>th</sup> June: Summer Event by PTFA

3<sup>rd</sup> July: Sports Day

10<sup>th</sup> July: Year 6 PGL trip

17<sup>th</sup> July: Reserve sports day in case of bad weather.

24<sup>th</sup> July: Final Day of summer term



## Education White Paper

Parents can be assured that while the new Education White Paper sets out long-term plans for improving outcomes for all children, nothing will change overnight, and you can find full, accessible information on the GOV.UK website under Every Child Achieving and Thriving.



# What has been going on at Severnbanks?



We love sharing the wonderful moments from around our school! This page is full of photos capturing our pupils in action. We hope these snapshots give you a glimpse of the energy, creativity, and fun happening at Severnbanks every day.

Our World Book Day come and Read event was huge success. We had so many families attend we ran out of room! Following such positive feedback we will be running these again.

In sewing club the children have been making their own soft toys.



The first rounds of the annual chess tournament have taken place. I wonder who the winner will be?



## Being Stars that Shine outside of School too!



Kai is a passionate runner and ran a recent park run at Riverfront in 22 mins and 41 seconds. Amazing time Kai, well done.



Scarlett has been showing great ambition and has achieved her National Car racing license. Well done.



Bruno is a volunteer at Lydney Parkrun and has reached an impressive milestone of 50 volunteer sessions. Wow, Bruno this really is living our school values.



St Mary's Church, Lydney

Sunday 15<sup>th</sup> March

# Mothers' Day

## Mothers Sunday

Thanking God for those who have cared for us



10am St Mary's, Church Road

Fun and informal, suitable for all ages as we thank God for **everyone** who loves and cares for us. Followed by coffee/tea and home made cakes!

## All So Very Welcome!



# EASTER FOOTBALL CAMP

## WEEK ONE

- MARCH 31<sup>ST</sup>
- APRIL 1<sup>ST</sup>
- CHAMPIONS LEAGUE THEME DAY!
- APRIL 2<sup>ND</sup>

## WEEK TWO

- APRIL 7<sup>TH</sup>
- APRIL 8<sup>TH</sup>
- ENGLISH FOOTBALL LEAGUES THEME DAY!
- APRIL 9<sup>TH</sup>

AGES 5-14

£18 PER DAY

DISTRICT PLAYERS DISCOUNT AVAILABLE



FUN GAMES



SKILLS & DRILLS



MATCHES & TOURNAMENTS



QUALIFIED COACHES

FREEDOM LEISURE LYDNEY & FREEDOM LEISURE WYDEAN (WYDEAN ONLY AVAILABLE ON WEDNESDAYS)

EXTENDED HOURS AVAILABLE WITH KIDS CLUB

CONTACT MARK: ☎ 07444 436637 ✉ mark@prostars-fse.com

prostars.ipalbookings.com

# PROSTARS EASTER HOLIDAY CAMPS

**ALL VENUES NOW LIVE!**  
BOOK YOUR SPOT TODAY!

**HOLIDAY CLUB - SCHOOL VENUES**

- 📍 Lift Offa's Mead - Chepstow
- 📍 Primrose Hill - Lydney
- 📍 Berry Hill - Coleford
- 📍 Rosary - Stroud
- 📍 Naunton Park - Cheltenham
- 📍 Ashfield Park - Ross-on-Wye

**FOOTBALL CAMP - FREEDOM LEISURE VENUES**

- 📍 Wydean - Chepstow
- 📍 Dean Academy - Lydney

**Tiered Pricing**

- 🍷 Tier 1: £15
- 🍷 Tier 2: £20
- 🍷 Tier 3: £25

**WHAT TO EXPECT**

- 🐰 Easter Egg Hunt
- 🌸 Spring Themed Crafts
- 🏆 Variety of Sports & Games
- ✅ DBS Checked
- 🛡️ Fully Insured
- 🚑 First Aid Trained
- 🛡️ Safeguarding Trained

**AGES: 5-11**

**CONTACT:** info@prostars-fse.com

**BOOK ONLINE:** PROSTARS.IPALBOOKINGS.COM

Supported by Gloucestershire Gateway Trust

**FREE!**

# Read Together after-school!

- ✓ Group storytime
- ✓ Fun craft activity
- ✓ Free books to take home
- ✓ Drink and snacks provided

at River Children and Family Centre  
Lydney, GL15 5AU

Drop in from 3:15pm-4:30pm  
Every Monday during term time

www.readwithme.org.uk | ReadWithMe2020 | ReadWithMeOrg

# Pillowell Early Years



**Stay & Play birth - 3yrs  
Tuesdays from 9.30am**

School Road Pillowell GL15 4QT

Join us for some messy play,  
songs, crafts and refreshments



PillowellEarlyYearsFOD

[pillowellearlyyears@gmail.com](mailto:pillowellearlyyears@gmail.com)





# Easter Appeal 2026

Many of our children are unable to eat orally,  
so we are asking for a **£2** donation to fund  
Easter activities and respite during the  
Easter Half Term instead!



Scan to  
Donate



The logo for HAF (Holiday Activities & Food) features the letters 'HAF' in a bold, multi-colored font (green, yellow, orange, red).

Holiday Activities & Food

The logo for Progressive Active Camps features the words 'Progressive Active Camps' in a stylized, multi-colored font (blue, pink, red).A string of seven colorful Easter eggs (blue, yellow, pink, purple, orange, white, and red) hangs across the top of the page.

# EASTER HALF TERM ACTIVE CAMPS!

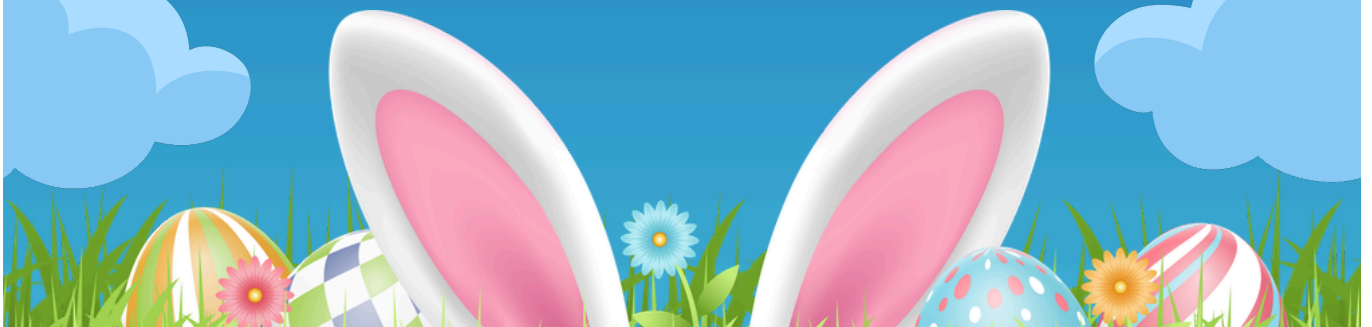
**Forest View Primary School, Cinderford**

**Week 1 - Monday 30th March until Thursday 2nd April**

**Week 2 - Tuesday 7th April until Friday 10th April**

**Waterwells Primary Academy, Gloucester**

**Tuesday 7<sup>th</sup> April until Friday 10<sup>th</sup> April**



**[CLICK HERE TO BOOK ONLINE NOW!](#)**

**Normal Times: 9.30am - 4.30pm**

**Early drop off: 8.30am**

**Late pick up: 5.30pm**

**Ages  
5-12**

**20+ Sports on offer | Easter Themed Activities | Games and Prizes!**

**For more information, [NorthGlos@progressive-sports.co.uk](mailto:NorthGlos@progressive-sports.co.uk)**





BREAM SPORTS CLUB

# EASTER FUN DAY

at Bream Sports Club

**SATURDAY 4TH APRIL**

**12PM - 4PM**

Join us for a fun-filled family day!

## BUSTERS



**FREE ENTRY!**



- Inflatables
- Stalls
- Live Music
- Games
- Easter Bunny Appearance
- Raffle

Fun for all ages • Everyone welcome







**Families of the children in the bands are invited to attend.**