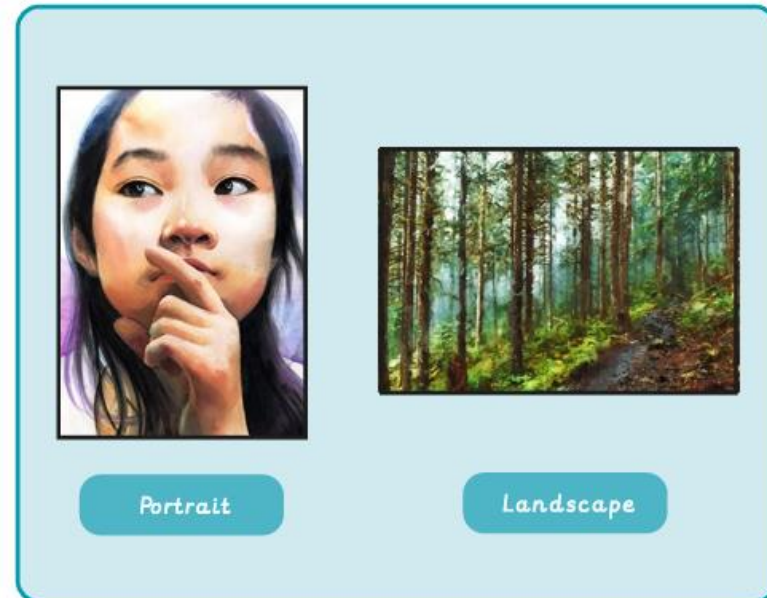
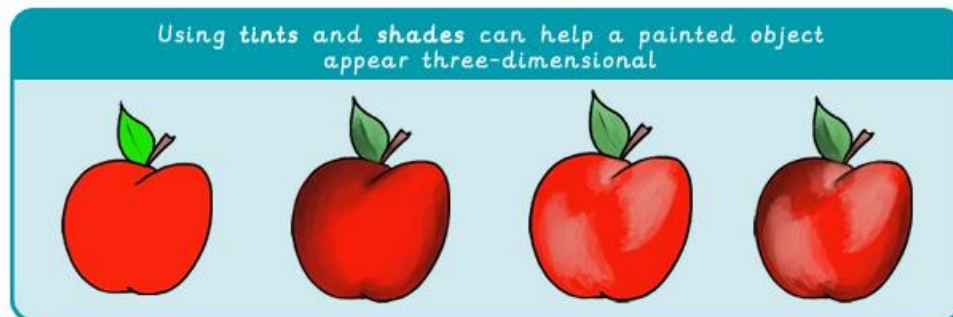
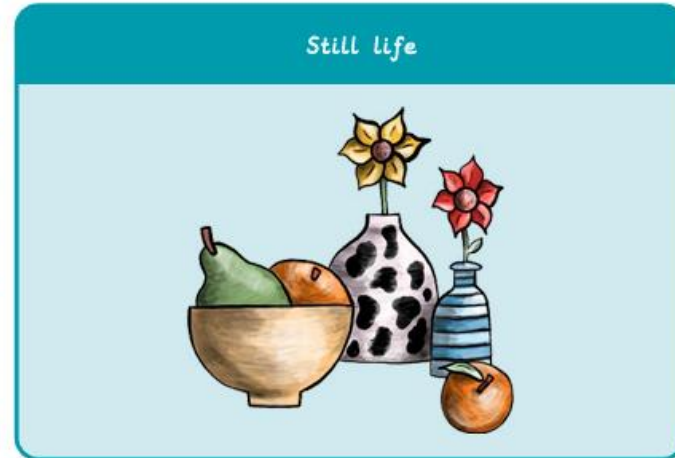


Year 4 - Painting and mixed media



Composition	Putting different elements together in a pleasing way
Hue	Describing an exact colour: sky blue, dark green, rose pink
Proportion	How big a part of something looks compared to the rest of it
Shade	Adding black to a colour makes a shade
Shadow	A dark area created when light is blocked
Still life	An artwork showing a collection of things that don't move, e.g. objects rather than people
Tint	Adding white to a colour makes a tint
Tone	The light and dark something is



Year 4 - Painting and mixed media

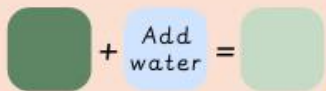


Colour mixing



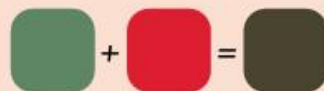
Making colours lighter:

+ a lighter colour  
+ water  
+ white



Making colours darker:

+ a darker colour  
+ black



Painting techniques



Dabbling



Stippling



Pointillism



Adding texture to paint



Washes



Using different tools

# Severbanks Primary School

'Where STARS Shine'